

NEOCEMENT

WALL & FLOORS SEAMLESS DECORATIVE CEMENT



DESCRIPTION

Neocement is an innovative system especially engineered for creating decorative wall and floor cement seamless finishes. It consists of a multipurpose tri-component mixture designed for resurfacing existing or degraded floorings, giving them the look and feel of new concrete. Neocement can also be colored and stained to achieve completely customizable and unique decorative effects on a multitude of surfaces such as concrete, wood, metal, marble, granite, ceramic tiles and even glass, providing interior designers with a wide array of bespoke and modern finishes options such as:

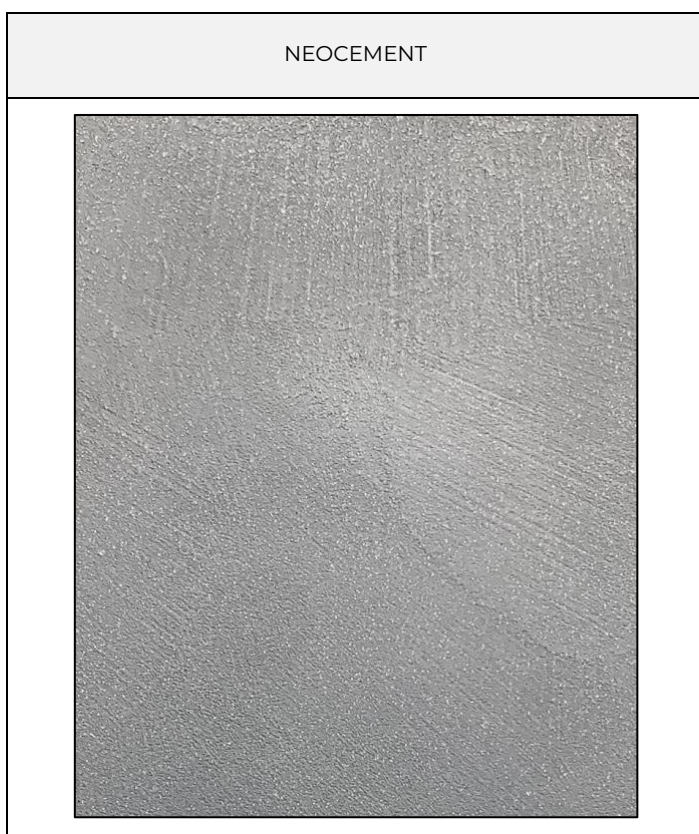
- Concrete wall and floor finishes, which allows the design to extend from the floor to the walls and even ceilings.
- Degraded surfaces restoration, allowing for cost reduction by eliminating the need to deal with waste removal.
- Light concrete furniture by applying Neocement on furniture built from wood and metal.
- Bespoke finishes, using stencils to create custom art and graphics integrally in the floor finish.

Neocement is available in 1 version:

- Neocement: the traditional finish with a natural mix of minerals.

Neocement filler is also available in 2 versions:

- Neocement filler: the traditional filler for neocement.
- Neocement filler LT: can withstand very cold weather conditions.



RECOMMENDED FOR

Neocement is suitable for Interior & exterior applications on both horizontal and vertical surfaces in locations such as kitchens, bathrooms, shower box, or even as coatings for bathtubs.

KEY FEATURES

- Self-crosslinking resin
- High strength with impact and abrasion resistance

COLORTEK®
Wall and Floor Fashion

info@colortek.eu
www.colortek.eu



NEOCEMENT

WALL & FLOORS SEAMLESS DECORATIVE CEMENT



- Antistatic and fire resistance
- Moisture vapor permeable
- Protects against penetration of water, chlorides & CO₂
- Flexible flooring
- Low VOC Technology
- Seamless flooring option
- Extends lifecycle appearance of concrete
- Extensive choice of colors, textures and patterns
- Contains recyclable raw material.
- Contributes to power saving thanks to its high UV reflectance and cool roof technology.

PHYSICAL PROPERTIES

Solvent Type	Waterborne
Finish Type	Mid-sheen polished finish
Working Life	3 hours at 25 C 80% relative humidity
Open to Traffic	In 24 hours for light traffic. It is advisable for full cure to be achieved.
Full Cure	Full cure in 72 hours depending on weather conditions and ambient temperature
Spreading Rate	Approximately 2 m ² /kg/coat – 2 coats required
Average Dry Time	Touch dry in 1 hour based on ASTM D 1640
Dry Film Thickness	0.4-0.7 mm depending on application technique
Density (3 Components)	1.76 g/cm ³
Solids	Approximately 70%
Viscosity	45,000 – 55,000 cP (spindle 7/ Speed 10) based on ASTM D2196
VOC	7 g/L Compliant with EU 2010 regulations maximum of 30 g/L.
Bases	200/00

TEST RESULTS

Average Dry Time	ASTM D 1640	Touch dry in 1 hour
Indoor Air Quality	UNI EN ISO 16000-9:2006	A+
Adhesion	ASTM D4541	>2 MPa, exceeds FeRFA limits for excellent flooring adhesion
Water Vapor Permeability	BS2782	203 g/m ² in 24 hours
Water Absorption	DIN 52617	0,076 kg/m ² X h ^{0,5}
Surface Hardness	ASTM 2240	Shore D >75
Operating temperatures	0°C to +100°C at 0-100% relative humidity (when coated with 100 microns Colortek Polylock)	
Resistance To Impact	ASTM D2794	Intact after collision (>1.4m For 1kg ball / >0.7m for 2kg ball)
Chemical Resistance	ASTM D 3260 & ASTM D 1308 - No alteration or reduction of Shore	
Slip Resistance	ASTM C1028	SRV >70 (R12)
Thermal Resistance	ASTM E1530-11	λ =0,46 (W/mK)
Fire Reaction	UNE-EN ISO 1716:2011 UNE-EN ISO 9239-1:2011	A2 _{fl} -s1
Abrasion Resistance	STM D4060	500 cycles/mil with 1 Kg load using CS-17

COLORTEK®
Wall and Floor Fashion

info@colortek.eu
www.colortek.eu



NEOCEMENT

WALL & FLOORS SEAMLESS DECORATIVE CEMENT



CERTIFICATIONS

THIS PRODUCT IS GREENGUARD GOLD CERTIFIED

The above mentioned certification determines our products compliance with the following building codes and programs amongst others:

- CHPS 2.2.2: Paints & Coatings
- LEED 2008, LEED 2009 and LEED V4
- Compliant with LIBNOR 84:1999& LIBNOR 83:1999

This product is compliant with the following standards

- UL 2818 - 2013 Gold Standard for Chemical Emissions for Building Materials, Finishes and Furnishings
- Masters Paint Institute #53 – Latex Interior Flat
- Masters Paint Institute #10 – Latex Exterior Flat

SURFACE PREPARATION

Neocement can be applied on a wide variety of substrates such as concrete, screed, tiles, wood, and others. Surface preparation should follow the best practices for the specific type, condition, and location of the substrate.

General best practices require all surfaces to be cured, clean, dry, and free from dirt, dust, rust, stains, grease, oil, mildew, wax, efflorescence, bond-breakers and other contaminants. Remove all loose, peeling, or chalky parts by sanding, scraping, or any other appropriate methods. Repair all cracks, holes, and other surface imperfections with a suitable patching material. Repaired surfaces should then be sanded smooth, dusted clean and primed with a suitable Colortek primer.

New plaster or masonry surfaces must be allowed to cure (28 days) before applying base coat. Cured plaster should be hard, have a slight sheen and maximum pH of 10; soft, porous or powdery plaster indicates improper cure. Knife off any protrusions and prime the plaster before and after applying patching compound.

Poured or pre-cast concrete with a very smooth surface should be etched or abraded to promote adhesion, after removing all form release agents and curing compounds. Remove any powder or loose particles.

Please refer to additional information in the application section of this data sheet.

APPLICATION CONDITIONS

Neocement is to be applied to a surface with less than 10% MVTR (Moisture Vapor Transmission Rate) or less than 90% RH (Relative Humidity). Temperature should be between 5°C to 35°C to ensure correct application and curing times.

APPLICATION METHOD - FLOORINGS

HORIZONTAL SYSTEMS ON A UNLEVELED AND UNEVEN CONCRETE OR SCREED SURFACE

1. On concrete and other absorbent substrates, apply Colortek SX0 Primewell or SX9 Humiguard if humidity is detected. Please Refer to SX0 PrimeWell and SX9 HumiGuard data sheets for instructions specific to these products.
2. Apply Neofiller, sand the surface with a 40 grid and remove the dust. Please Refer to the Neofiller data sheet for instructions specific to this product.
3. Apply Neocement in 2 coats.
 - o Mix all 3 components until obtaining a pasty mortar with good sag resistance.
 - o Apply the first coat, and let the surface dry.
 - o Apply the second coat, and let the surface dry before sanding it with a 150 or 220 grid.
 - o Remove any dust on the surface.
4. Apply the desired protective topcoat depending on the intended use and location of the surface (refer to protective top coat selection table, and refer to the relevant data sheet for instructions specific to your selected product.

HORIZONTAL SYSTEM ON A LEVELED AND EVEN CONCRETE OR SCREED SURFACE

1. Sand the screed to roughen the surface using a diamond disc 50.
2. Repair existing small holes and cracks using Colortek SX2 FillWell and sand to ensure it is leveled with the surface. Please refer to the SX2 FillWell data sheet for mixing instructions.
3. Apply Colortek SX9 HumiGuard using the following method: mix part A and part B, apply using a mohair epoxy roller and

COLORTEK®
Wall and Floor Fashion

info@colortek.eu
www.colortek.eu



NEOCEMENT

WALL & FLOORS SEAMLESS DECORATIVE CEMENT



immediately broadcast part C onto the surface.

4. Allow the surface to cure for 24 hours, then vacuum any excess part of the C component on the surface before sanding with a 40 grit sanding paper, and cleaning the dust with a vacuum cleaner.
5. Apply Neocement in 2 coats.
 - o Mix all 3 components until obtaining a pasty mortar with good sag resistance.
 - o Apply the first coat, and let the surface dry.
 - o Apply the second coat, and let the surface dry before sanding it with a 150 or 220 grid.
 - o Remove any dust on the surface.
6. Apply the desired protective topcoat depending on the intended use and location of the surface (refer to protective top coat selection table, and refer to the relevant data sheet for instructions specific to your selected product).

HORIZONTAL SYSTEM ON TILES

1. On glazed tiles and other blocked substrates, slightly sand the surface and apply Neogrip. Please Refer to the data sheet for instructions specific to this product.
2. Apply Neocement in 2 coats.
 - o Mix all 3 components until obtaining a pasty mortar with good sag resistance.
 - o Apply the first coat, and let the surface dry.
 - o Apply the second coat, and let the surface dry before sanding it with a 150 or 220 grid.
 - o Remove any dust on the surface.
3. Apply the desired protective topcoat depending on the intended use and location of the surface (refer to protective top coat selection table, and refer to the relevant data sheet for instructions specific to your selected product).

APPLICATION METHOD – WALLS

VERTICAL SYSTEMS ON CONCRETE

1. On concrete walls, apply Colortek Fondo F.
2. Apply Neocement in 2 coats.
 - o Mix all 3 components until obtaining a pasty mortar with good sag resistance.
 - o Apply the first coat, and let the surface dry.
 - o Apply the second coat, and let the surface dry before sanding it with a 150 or 220 grid.
 - o Remove any dust on the surface.
3. Apply the desired protective topcoat depending on the intended use and location of the surface (refer to protective top coat selection table).

VERTICAL SYSTEMS ON TILES

1. On glazed tiles, apply the Colortek Putty XT/XF exterior skim coat system.
2. Apply Neocement in 2 coats.
 - o Mix all 3 components until obtaining a pasty mortar with good sag resistance.
 - o Apply the first coat, and let the surface dry.
 - o Apply the second coat, and let the surface dry before sanding it with a 150 or 220 grid.
 - o Remove any dust on the surface.
3. Apply the desired protective topcoat depending on intended use of the surface and location (refer to protective top coat selection table).

COLORTEK®
Wall and Floor Fashion

info@colortek.eu
www.colortek.eu



NEOCEMENT

WALL & FLOORS SEAMLESS DECORATIVE CEMENT



IMPORTANT APPLICATION NOTICES

1. Apply Neocement in small strokes of 30 to 50 cm and avoid edges drying in large areas to avoid marks.
2. When applying on ceramic tiles, it is important to treat the joint tiles with Colortek SX2. Ceramic tiles joints are traditionally filled with cement-based tiling grout which is prone to letting humidity pass and the Epoxy based SX2 grout will prevent the ghosting effect.
3. When applying on Terrazzo, we recommend the application of an additional coat of Neofiller. Terrazzo tiles differ greatly in their material composition with some highly prone to humidity. The additional coat will help in preventing surfacing humidity.
4. When applying Neocement on floors, it is important to apply it flush to the wall and to create a virtual skirting that impedes water filtration underneath the decorative coat by applying the protective sealer up to 3 cm vertically.

PROTECTIVE TOP COAT SELECTION					
CONDITIONS		VERTICAL SURFACE	HORIZONTAL LIGHT TRAFFIC	HORIZONTAL MEDIUM TRAFFIC	HORIZONTAL HIGH TRAFFIC
INTERIOR	Dry conditions	Colortek Wax, Aqua Wax, Colortek 4005, Polylock	NeoShield Polylock	Polylock	Neofiller 3 coats + Polylock
	Humid conditions	Polylock (3 coats)	Polylock (3 coats)	Polylock (3 coats)	Neofiller 3 coats + Polylock (3 coats)
	Submerged conditions	Colortek PL1 (2 coats)*	Colortek PL1 (2 coats)*	Colortek PL1 (2 coats)*	Neofiller 3 coats + Colortek PL1 (2 coats)*
EXTERIOR	Dry conditions	Colortek 4005, Polylock	Polylock (2 coats)	Polylock (2 coats)	Neofiller 3 coats + Polylock
	Humid conditions	Polylock (3 coats)	Polylock (3 coats)	Polylock (3 coats)	Neofiller 3 coats + Polylock (3 coats)
	Submerged conditions	Neofiller 3 coats + Colortek PL1 (2 coats)*	Neofiller 3 coats + Colortek PL1 (2 coats)*	Neofiller 3 coats + Colortek PL1 (2 coats)*	Neofiller 3 coats + Colortek PL1 (2 coats)*

* Colortek PL1 has a glossy finish. If a flat finish is required, use Colortek PL1 Low Gloss instead.

PACK SIZES

	Paste	Resin	Filler	Filler LT
Drum	13.88 Kg	2.82 Kg	8.42 Kg	8.42 Kg
Gallon	2.31 Kg	0.47 Kg	1.4 Kg	1.4 Kg

MIXING INSTRUCTIONS

1. Tint paste with desired color
2. Once pasted tinted, add resin in paste – Mix with drill until reaching a homogenous paste.
3. Finally add the filler to the mix and drill until reaching a homogenous paste.

SHELF LIFE

Filler: 12 months from the date of production.

Base & Resin: 24 months from the date of production.

COLORTEK®
Wall and Floor Fashion

info@colortek.eu
www.colortek.eu



NEOCEMENT

WALL & FLOORS SEAMLESS DECORATIVE CEMENT



STORAGE AND HANDLING

Care should be taken to avoid spillage. Store in a dry area. Protect from freezing. Extreme temperatures may cause paint to become unusable. For example: freezing and thawing may cause paint to gel, and high heat may cause solid skin to form.

SAFETY

Use under well ventilated conditions. Do not breathe or inhale spray mist or sanding dust. Avoid skin contact; spillage on the skin should immediately be removed with suitable cleanser, soap and water. In case of eye contact, flush immediately with water for at least 15 minutes and seek medical attention immediately. If you have trouble breathing, leave the area to obtain fresh air. If continued difficulty is experienced, get medical attention immediately.

CLEANING

Remove as much leftover product as possible from the application equipment before cleaning. Clean equipment immediately after use with warm soapy water and rinse thoroughly. Do not empty product into drains or watercourses.

TECHNICAL ASSISTANCE

Available through your local COLORTEK® Design Center or through your COLORTEK PAINTS® authorized distributor. For the location of the retailer nearest you, email us at info@colortek.eu or check our website www.colortek.eu.

DISCLAIMER

Product batches are subject to stringent quality control checks in conformity with ISO 9001:2015, Certificate LB18/234269.

The information submitted in this manual is correct to the best of our knowledge & experience. No liability whatsoever can be accepted based on the information supplied herein.

